

- 1
- 2
- 3
- 4
- 5
- 6
- 7
- 8
- 9
- 10
- 11
- 12
- 13
- 14
- 15
- 16
- 17
- 18

MATERIAL

Aluminium, epoxy resin coating, RAL 9005 black colour, matte finish.
AISI 304 stainless steel screws and nuts.

STANDARD EXECUTIONS

- **GN 146.1-B**: without sliding bushings.
- **GN 146.1-G**: with polyamide based (PA) or polytetrafluoroethylene based (PTFE) technopolymer sliding bushing.

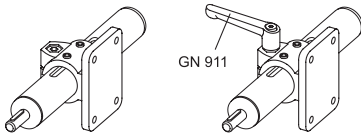
FEATURES AND APPLICATIONS

GN 146.1 connecting clamps can normally be matched with the linear actuators.

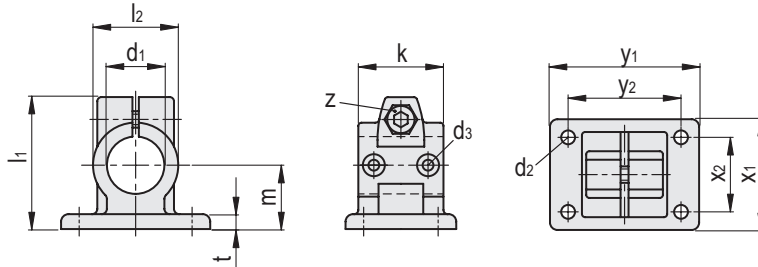
The additionally provided mounting holes are used to connect to the drive key of a linear actuator. The hole identified as G is provided with sliding bushings

By clamping the guide hole d1 it is possible to adjust the actuator positioning and to lock the slider after having set up the final position.

The "z" grub screw may be replaced by the kit GN 911 (see page 1372).



Conversion Table	
1 mm = 0.039 inch	
d1	
mm	inch
30	1.17
40	1.56
50	1.95



GN 146.1-B

METRIC

Code	Description	d1 Bore without sleeve bearing	d2	d3	k	l1	l2	m	t	z	x1	x2	y1	y2	z Clamping kit	Δ
GN.46406	GN 146.1-B30-40-2-SW	30	6.5	M4	40	62	40	30	7	M8-25	52	35	70	53	GN 911-63 / GN 911-78	154
GN.46407	GN 146.1-B30-56-2-SW	30	8.5	M4	56	83	56	42	10	M10-35	78	52	108	82	-	430
GN.46416	GN 146.1-B40-56-2-SW	40	8.5	M5	56	83	56	42	10	M10-35	78	52	108	82	GN 911-78 / GN 911-92	500
GN.46417	GN 146.1-B40-65-2-SW	40	11	M5	65	95	65	50	14	M10-50	92	62	128	98	-	675
GN.46426	GN 146.1-B50-65-2-SW	50	11	M6	65	95	65	50	14	M10-50	92	62	128	98	GN 911-78 / GN 911-92	795
GN.46436	GN 146.1-B60-80-2-SW	60	11	M8	80	112	80	60	14	M10-50	110	74	154	118	GN 911-78 / GN 911-92	1130

GN 146.1-G

Code	Description	d1 Bore with sleeve bearing	d2	d3	k	l1	l2	m	t	z	x1	x2	y1	y2	z Clamping kit	Δ
GN.46446	GN 146.1-G30-40-2-SW	30	6.5	M4	40	62	40	30	7	M8-25	52	35	70	53	GN 911-63 / GN 911-78	154
GN.46447	GN 146.1-G30-56-2-SW	30	8.5	M4	56	83	56	42	10	M10-35	78	52	108	82	-	430
GN.46456	GN 146.1-G40-56-2-SW	40	8.5	M5	56	83	56	42	10	M10-35	78	52	108	82	GN 911-78 / GN 911-92	500
GN.46457	GN 146.1-G40-65-2-SW	40	11	M5	65	95	65	50	14	M10-50	92	62	128	98	-	675
GN.46466	GN 146.1-G50-65-2-SW	50	11	M6	65	95	65	50	14	M10-50	92	62	128	98	GN 911-78 / GN 911-92	795
GN.46476	GN 146.1-G60-80-2-SW	60	11	M8	80	112	80	60	14	M10-50	110	74	154	118	GN 911-78 / GN 911-92	1130

Tube connectors